

# SHAMBALLA

BRACELET Inspired by the ancient Shamballa kingdom.

## 🇬🇧 Working and origin.

Shambhala, also spelled as Shambala or Shamballa, is a mythical kingdom. In the texts connected with Kalachakra Tantra it is situated on the north side of the Himalaya. Most of the time it is associated with Tibet. In the Bon religion you can also find a mythical kingdom with the name Olmoungling where the founder of the religion Tonpa Shenrab should have ruled about. In tradition is Shambhala a country that was completely in to practicing and teaching Kalachakra Tantra. In this tantra so they say that the historical Buddha this entrusted to the king of the country. Shambhala has the shape of an enormous lotus flower. There are enormous woods from sandelwood trees, Lakes that are also in the shape of a lotus flower and it is surrounded by a chain of Mountains. In the middle of the kingdom you can find the capitol Kalapa. In the city centre is the mandala from the Buddha Kalachakra. The inhabitants from the in Total 960 million villages of Shambhala are ruled by the Kalkin, an exceptional wise ruler. The people in Shambhala are all beautiful and very healthy people; There is no illness and poverty to be found. The monks are keeping their promises in a fantastic way and they are all intelligent and dedicated to practice the vajrayana, although also the authentic kinds of the Indian Buddhism still being practiced most of the inhabitants of Shambhala are being reborn in their lives and are becoming Buddha's. But there are also severe problems and dark clouds over Shambhala. In the year 2425 the barbarians (Most of all described as the Muslims) that destroyed Buddhism in India will try to come in to Shambhala and do the same they did in India. The twenty-fifth Kalkin, Raudracakra, will lead his armies than to India where they will fight with the powers of evil in a true apocalyptic battle that will be won by the powers of Buddhism. This victory will result in a golden age where peoples will have a longer life and the land can be harvested without farming and planting the food. By then the whole earth will be dedicated to true Buddhism. The Shambhala bracelet stands for the power and strength of the ancient Shambhala and protects against illness and gives prosperity and happiness. This will be only stronger when using the right gemstone for a certain area.

## The Gemstones:

### Amethyst:

Against grief and homesickness, gives spiritual insights.

### Rose quartz:

Against homesickness, Enhances love and makes creative.

### Rock crystal:

Against depressions. Purifies the whole body.

### Sodalite:

Makes zealous. Helps overtired people.

### Turquoise

Protects against bad luck, Helps to solve unprocessed emotions.

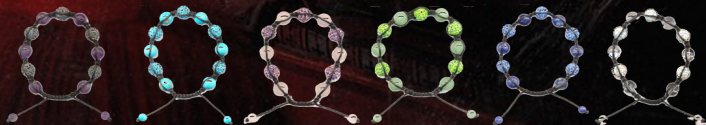
### Aventurine:

Brings your life back in balance.



timmergems.com

Kim Kardashian is always wearing a Shambhala bracelet.



Amethyst

Turquoise

Rose quartz

Aventurine

Sodalite

Rock crystal